



*Your Success is our Commitment*

[WWW.SCOLOUR.IN](http://WWW.SCOLOUR.IN)



ISO 9001:2015



## ABOUT US

Rooted in Surat since 2014, Scolour Technologies was earlier known as YCMK Technologies. Initiated by pacesetter Mr Hemant Patel, the company has manifested many milestones of success. Tremendous experience in textile printing machines and technologies has made Scolour Technologies acquire the foremost position in the market of textile machinery. Mr Hemant has an incredible experience with the textile printing machines and technologies. He has even derived the Rotary Inkjet Engraver Forward Reverse Spiral Printing Technology which is very popularly used by amateurs of Textiles Industries in India as well as out of the India. We offer unique turnkey solutions to our patrons covering all their business, institutional and industrial applications. In a systematized pursuit for the very unsurpassed technology, the company is tantamount with manufacturing high quality of machines that are quick and simple to use. Our hoary tradition of quality means we offer a broad range of products including Flat / Rotary Inkjet Engraver, Flat/Rotary UV Laser Engraver & Digital Textile printers.

The crucial assets of our company are our high-end technology and well-learned fervent team. Scolour Technologies is embraced by both sales and services with experience of decades. So, we have achieved an exceptional repute and a strong image by evolving exceedingly productive Textile machines and providing instantaneous service in the market. Followed by the dedicated Research and Development department that continuously work upon best possible approaches and theories, we have achieved the benchmark of the finest quality with unsurpassed technology.

Our customers across the place are testimonies of our quality and service. We are also buoyed by highly skilled professionals, who are always devoted to creating products to meet our client's prerequisite in a specific manner. We contemplate the fact that this can be accomplished only through durable obligation and well-sustained customer relationship as one of our foremost challenges. With the help of our unswerving and professional team, we have been able to send our products to our clients in diverse specifications and designs as per their requirements.

Get in touch for an inquiry. You can also check out the full range of our products for better understanding.



## PRODUCTS AND SERVICES



### ROTARY MACHINES

- ✓ Rotary Ink-Jet Engraver
- ✓ Rotary Screen Laser Stripping Machine
- ✓ Rotary Screen Developing Machine



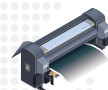
### ALL TYPES OF INK

- ✓ Thermal Black Ink
- ✓ Piezo Black Ink
- ✓ Konica Black Ink



### FLATBED MACHINES

- ✓ Flatbed Ink-Jet Engraver
- ✓ Flatbed Thermal Jet Machine
- ✓ Flatbed Screen Developing Machine



### DIGITAL PRINTERS



### SPARES

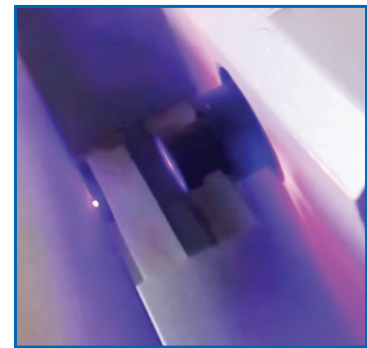
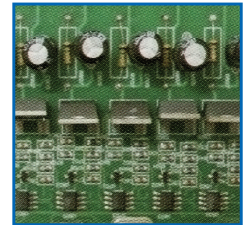


### AMC



# UV LASER ROTARY ENGRAVER

Blue light (UV) laser engraving machine is a novel developed screen-making equipment on the basis of Laser Plotter, Realizing the bright room operation with lower cost, fast speed and high precision, it is the most ideal screen-making equipment.



## TECHNICAL SPECIFICATION

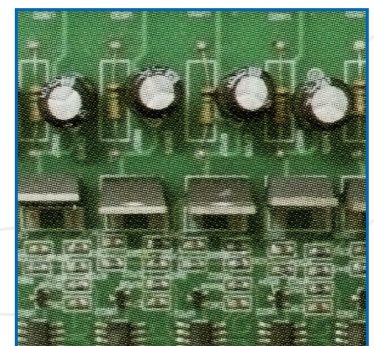
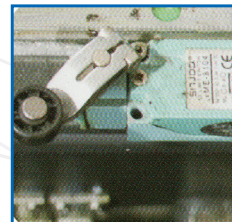
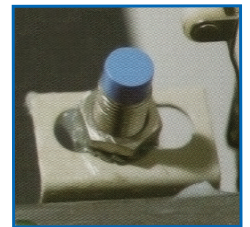
|                        |  |
|------------------------|--|
| Screen Breadth         | : 2200 mm  |
| Screen Repeat          | : 640mm, 819mm, 914mm & 1018mm                                 |
| Resolution             | : 360 DPI / 720 DPI / 1016DPI                                  |
| Display                | : Monitor  |
| Imaging Light Source   | : 405 NM   |
| Y Movement ( Linear)   | : Ball screw Technology  |
| Engraving Speed        | : 10 minute/seq.meter at 720 DPI<br>(depend on photo emulsion) |
| Acceptable File Format | : Tiff / BMP/ JPG/ JAR   |
| Accuracy               | : +- 0.02mm  |
| Room Temp              | : 20 to 25 Degree Centigrade                                   |
| Humidity               | : 30 to 80% ( Non Condensing )                                 |
| Room Lighting          | : Yellow Light   |
| Power                  | : 2 KW / 220V, 50HZ (Single Phase)                             |



# UV LASER FLATBED ENGRAVER

## TECHNICAL SEPECIFICATION

|                          |   |
|--------------------------|---|
| Effective Engraving Area | : 2500 x 1600 / 1600 x 2500 / 1800 x 3500                             |
| light Path               | : (48)standard(48lines)   |
| Engraving Resolution     | : 360dpi/720dpi/1440dpi option  |
| Glue                     | : Regular Glue  |
| Light Source             | : 405nm Semiconductor Laser Diode                                     |
| Engraving Speed          | : 12min/m2(48lines)   |
| Acceptable File Format   | : TIFF/BMP/JPG/JAR/JC/GIF   |
| Interface                | : USB2.0  |
| Working Environment      | : Temperature 5=40c Humidity 30=80%<br>(non- condensing) Yellow light |
| Power                    | : 1.5KW/220V,50HZ   |

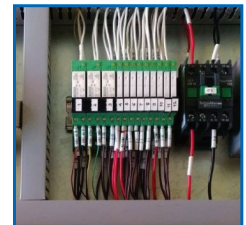




# ROTARY INK-JET ENGRAVER

## TECHNICAL SEPECIFICATION

|                        |  |
|------------------------|--|
| Screen Length          | : 2200 mm, 3500 MM                                       |
| Jetting Technology     | : Spiral Forward / Reverse                               |
| Screen Repeat          | : 640mm(standard) (725, 820,914,1018 optional)           |
| Resolution             | : 360 x 720 DPI / 720 x 720 DPI / 720 x 1440 DPI         |
| Display                | : HMI  |
| Head Type              | : Piezo Technology                                       |
| Y Movement (Linear)    | : Ball screw Technology                                  |
| Engraving Speed        | : 10 to 15 minute/sq.mtr excluding expose time emulsion) |
| Exposing Unit          | : Including In Machine                                   |
| Air Compressor         | : portable unit included                                 |
| Head Clean             | : Automatic  |
| Connectivity           | : USB  |
| Acceptable File Format | : Tiff / BMP/ JPG/ JAR                                   |
| Accuracy               | : +- 0.5mm   |
| Software               | : Photoprint Rip (license version)                       |
| Room Temp              | : 20 to 25 Degree Centigrade                             |
| Humidity               | : 30 to 80% (Non condensing)                             |
| Room Lighting          | : Yellow Light   |
| Power                  | : 1.5 KW / 220V, 50HZ (Single Phase)                     |

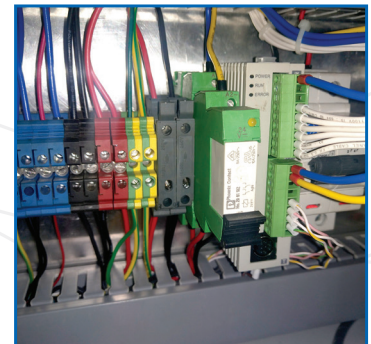
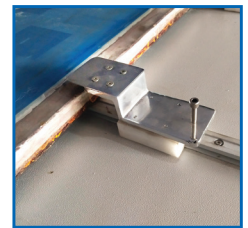




# FLATBED INK-JET ENGRAVER

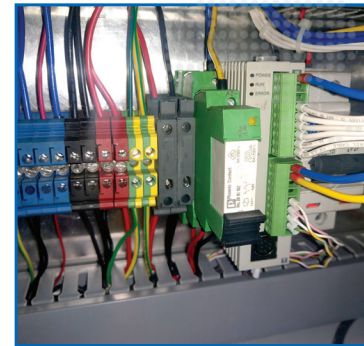
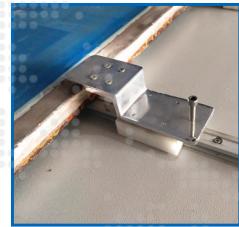
## TECHNICAL SEPECIFICATION

|                        |  |
|------------------------|--|
| Machine Size           | : Standard 1Mtr X 1 Mtr Upto 4 Mtr X 4Mtr & customized               |
| Resolution             | :360X720 DPI / 720X720 DPI   |
| Print Head             | : Piezo Electric   |
| Nozzles                | :180 X 8 colour  |
| Head Clean             | : Automated Print Head Cleaning program                              |
| Y Movement (Linear)    | : Double Ball Screw Technology                                       |
| Engraving Speed        | : 6 minute/seq.meter at 360X720 dpi                                  |
| Acceptable File Format | : Tiff / BMP/ JPG/ JAR   |
| Accuracy               | : + or – 0.5mm   |
| Operatingcondition     | : 20 to 25 Degree Centigrade, Humidity 30 to 80% (NonCondensing)     |
| Software               | : Photoprint license version with dongle & Print Exp driver software |
| Room Lighting          | : Yellow Light   |
| Power                  | : 1 Kva / 220V, 50HZ (Single Phase)                                  |
| Ink Supply             | : Continuous ( Ink Tank)   |
| Computer CPU           | : Included in machine,(only monitor need to arrange by customer)     |
| Networking             | : All standard PC  |





# VERTICAL FLATBED INK-JET ENGRAVER



## TECHNICAL SEPECIFICATION

|                        |  |
|------------------------|--|
| Machine Size           | : Standard 1Mtr X 1 Mtr Upto 4 Mtr X 4Mtr & customized               |
| Resolution             | :360X720 DPI / 720X720 DPI   |
| Print Head             | : Piezo Electric   |
| Nozzles                | :180 X 8 colour  |
| Head Clean             | : Automated Print Head Cleaning program                              |
| Y Movement (Linear)    | : Double Ball Screw Technology                                       |
| Engraving Speed        | : 6 minute/seq.meter at 360X720 dpi                                  |
| Acceptable File Format | : Tiff / BMP/ JPG/ JAR   |
| Accuracy               | : + or – 0.5mm   |
| Operatingcondition     | : 20 to 25 Degree Centigrade, Humidity 30 to 80% (NonCondensing)     |
| Software               | : Photoprint license version with dongle & Print Exp driver software |
| Room Lighting          | : Yellow Light   |
| Power                  | : 1 Kva / 220V, 50HZ (Single Phase)                                  |
| Ink Supply             | : Continuous ( Ink Tank)   |
| Computer CPU           | : Included in machine,(only monitor need to arrange by customer)     |
| Networking             | : All standard PC  |



# ROTARY SCREEN LASER STRIPPING MACHINE



## TECHNICAL SEPECIFICATION

|                      |  |
|----------------------|--|
| Stripping Method     | : Co <sub>2</sub> Laser Technology       |
| Adapter              | : 640mm                                  |
| Length               | : 2200mm, 3500mm, Customised             |
| Display              | : HMI                                    |
| Motion Control       | : Drive & Motor                          |
| Y Movement ( Linear) | : Ball Screw Technology                  |
| Operating Temp       | : 20 to 25 Degree Centigrade             |
| Laser Power          | : 180 w to 1440 w( Upto 8 Laser tube     |
| Max. Speed           | : Max 20-25 min for 1980mm length screen |
| Cooling              | : Air Cooling                            |
| Power Consumption    | : 3 KW                                   |
| Power Supply         | : AC 230 V ( Single Phase)               |





# ROTARY SCREEN DEVELOPING MACHINE



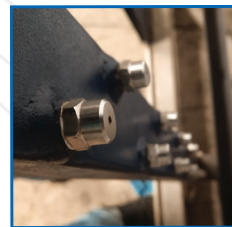
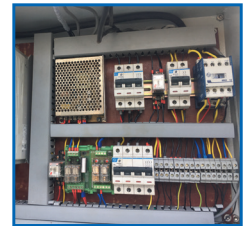
## TECHNICAL SPECIFICATION

|                        |  |
|------------------------|--|
| Screen Breadth         | : 2000 mm, 3500 mm   |
| Screen Repeat          | : 640 mm, 819 mm, 914 mm & 1018 mm   |
| Acceptable File Format | : Tiff / BMP/ JPG/ JAR   |
| Material               | : SS 304   |
| Power                  | : For Machine Panel: 1 KW / 220V, 50HZ (Single Phase)<br>Pressure PUMP Motor: 2HP / 440V, 50HZ (Three Phase) |

The Structural frame and cover of this machine made by stainless steel, there are two rubber rollers for screen movement and nozzles with two different angle.



# FLATBED SCREEN DEVELOPING MACHINE



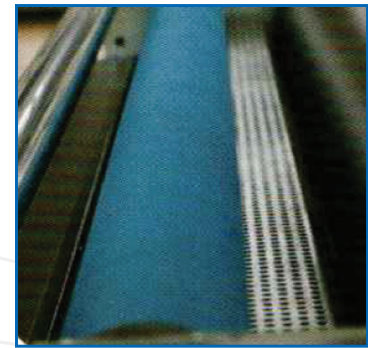
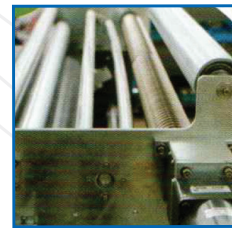
## TECHNICAL SEPECIFICATION







|                        |  |
|------------------------|--|
| Screen Breadth         | : Upto 4 meter   |
| Screen size            | : 4 meter X 4 meter  |
| Acceptable File Format | : Tiff / BMP/ JPG/ JAR   |
| Material               | : SS 304   |
| Power                  | : For Machine Panel: 1 KW / 220V, 50HZ (Single Phase)<br>Pressure PUMP Motor: 5HP / 440V, 50HZ (Three Phase) |

The Structural frame and cover of this machine made by stainless steel



# DIGITAL PRINTING MACHINE



| PRINT MODE   | FOUR PCS OF STARFIRE STAINLESS STEEL INDUSTRIAL HEADS                               |                      |   |                     |   |                     |  |                     |   |                      |   |                      |
|--|---|----------------------|---|---------------------|---|---------------------|--|---------------------|---|----------------------|---|----------------------|
|  | 4 heads( 4 color)   |                      | 4 heads( 8 color)   |                     | 4 heads( 4 color)   |                     | 8heads(8color)   |                     | 8heads(8color)  |                      | 8 heads(4 color)  |                      |
| Print speed<br>The speed will be subjected to the actual print.<br>It will be changed by trolley moving speed and different medium |  |                      |  |                     |  |                     |  |                     |  |                      |  |                      |
|  | 2pass<br>600 X 400dpi   | 140m <sup>2</sup> /h | 2pass<br>600 X 800dpi   | 70m <sup>2</sup> /h | 2pass<br>600 X 400dpi   | 75m <sup>2</sup> /h | 2pass<br>600 X 800dpi  | 66m <sup>2</sup> /h | 2pass<br>600 X 400dpi   | 125m <sup>2</sup> /h | 2pass<br>600 X 800dpi   | 150m <sup>2</sup> /h |
|  | 3pass<br>600 X 600dpi   | 100m <sup>2</sup> /h | 3pass<br>600 X 1200dpi  | 50m <sup>2</sup> /h | 3pass<br>600 X 600dpi   | 55m <sup>2</sup> /h | 3pass<br>600 X 1200dpi   | 44m <sup>2</sup> /h | 3pass<br>600 X 600dpi   | 90m <sup>2</sup> /h  | 3pass<br>600 X 1200dpi  | 104m <sup>2</sup> /h |
|  | 4pass<br>600 X 800dpi   | 75m <sup>2</sup> /h  | 4pass<br>600 X 1600dpi  | 40m <sup>2</sup> /h | 4pass<br>600 X 800dpi   | 40m <sup>2</sup> /h | 4pass<br>600 X 1600dpi   | 34m <sup>2</sup> /h | 4pass<br>600 X 800dpi   | 70m <sup>2</sup> /h  | 4pass<br>600 X 1600dpi  | 80m <sup>2</sup> /h  |
| Max. print width   | 2000mm  |                      | 2600mm  |                     | 3200mm  |                     | 4500mm   |                     |   |                      |   |                      |
| Max.fabric width   | 2020mm  |                      | 2620mm  |                     | 3220mm  |                     | 4520mm   |                     |   |                      |   |                      |
| Color  | CMYK, Lc, Lm, Orange, Grey, Blue, Red, Fluorescent Red, Fluorescent Yellow optional |                      |   |                     |   |                     |  |                     |   |                      |   |                      |
| Ink type   | Acidity, reactive, disperse, coating ink all compatibility                          |                      |   |                     |   |                     |  |                     |   |                      |   |                      |
| Power  | AC 220V ±10% , 15A 50HZ   |                      |   |                     |   |                     |  |                     |   |                      |   |                      |
| Environment  | Temperature 18-30°, relative humidity 35-80%(non condensing)                        |                      |   |                     |   |                     |  |                     |   |                      |   |                      |
| Overall size   | 3950(L) × 1900(W) × 1820(H)MM   |                      | 4550(L) × 1900(W) × 1820(H)MM   |                     | 4850(L) × 1900(W) × 1820(H)MM   |                     |  |                     |   |                      |   |                      |
| Weight   | 1500kg  |                      | 1800kg  |                     | 2000kg  |                     |  |                     |   |                      |   |                      |



# WHY SCOLOUR TECHNOLOGIES ?

We work on ethics, and our vision is to be at the top by serving our clients to be their esteemed machine manufacturer. Backed up by a professional team of doyens, engineers, and professionals, we work more briskly and justifiably.



## **Innovative Product**

Our founder Mr Hemant Patel has come up with the Rotary Inkjet Engraver Forward Reverse Spiral Printing Technology which is very popularly used by big houses of Textiles Industries in Surat as well as out of Surat.



## **Product Support**

We provide tremendous product support to our clients, and that has helped us stand apart in the textile industry. We believe in maintaining relationship even after sales and our after-support team takes due care of it.



## **Professional Team**

We have the ultimate professional team, which makes our clients rest assured about the quality of the product. Our technically sound team is knowledgeable enough to bring out the best.



## **Quality products**

We make sure our clients are contented with the quality of the products we offer. Also, we take due care by providing on-time delivery to our clients. Rapid delivery, work with ethics, and utmost quality is our only motto.



*Your Success is our Commitment*



+91 93278 88842



+91 92278 88842



info@scolour.in  
hemant@scolour.in

### **Head Office:**

Shed No. 95, 1st Floor, New Functional Estate, Road No. 6, Udhana Udyog Nagar, Surat - 394 210, Gujarat, India.

### **Branch Office:**

Site No. 64, Karpagam Nagar, Gangapuram Village, Chithode, Erode - 638 102, Tamil Nadu, India.